



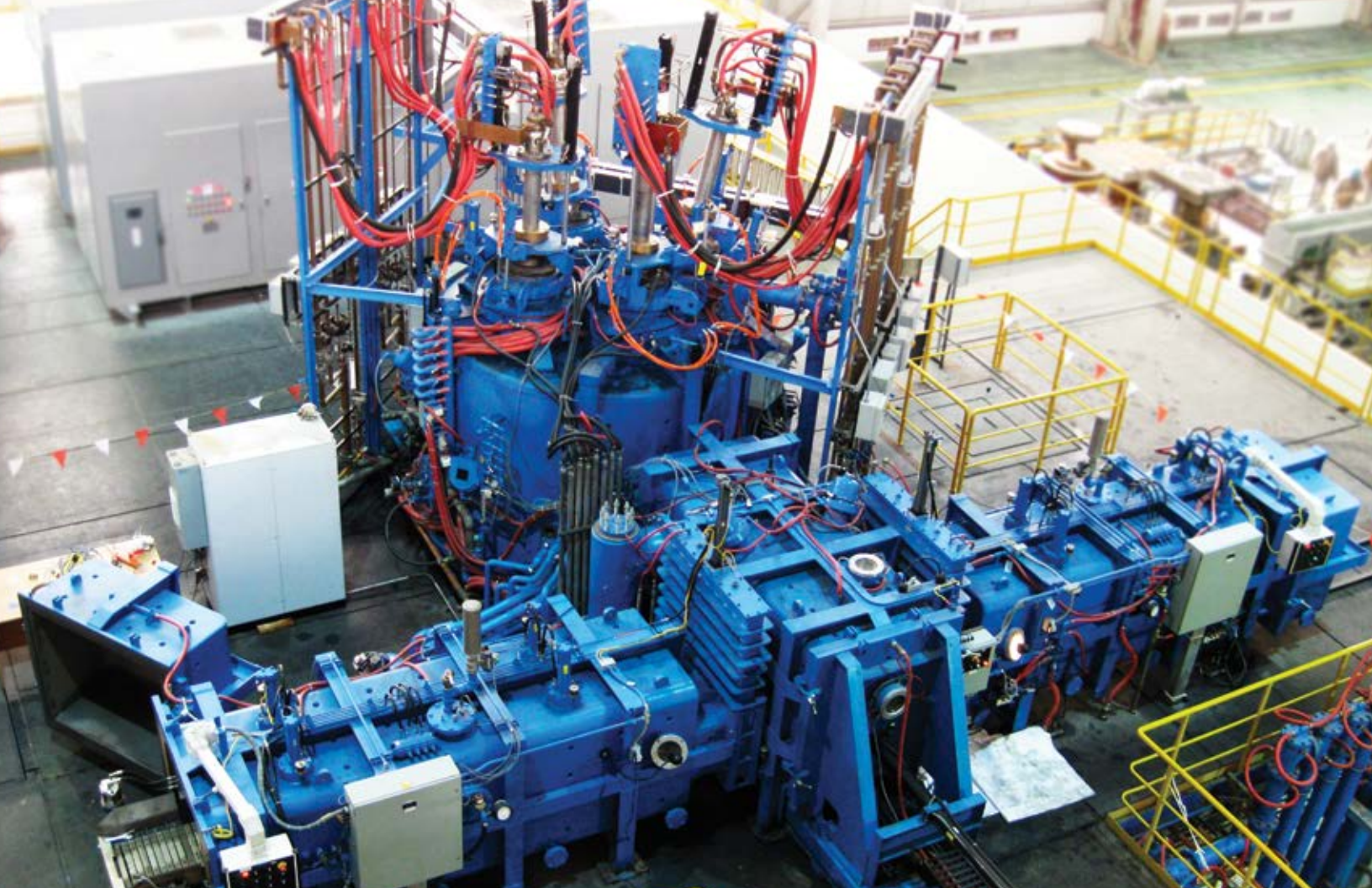
RETECH
A SECO/WARWICK COMPANY



Since 1963, **Retech Systems LLC** has been a global leader in the supply of vacuum metallurgical processing equipment. Our advanced process technologies for melting, refining and casting reactive, refractory, and rare earth metals, as well as superalloys include:

- Plasma Hearth Melting (PAM)
- Electron Beam Melting (EB)
- Vacuum Induction Melting (VIM)
- Vacuum Arc Remelting (VAR)
- Rototrode® (non-consumable casting)
- Plasma & Electron Beam Welding
- Powder Systems
- Cold Wall Induction
- SC/DS/EO
- Casting Systems

As the most fully integrated furnace manufacturer in the world, we provide customer access to a wide range of in-house resources, including technology, material and process development. Whether a laboratory scale furnace or complete custom design, identifying customer needs, as well as understanding the importance of producing relevant, viable, and cost-effective technologies, is the foundation upon which Retech is built.



Retech customers are currently the **ONLY** qualified PAM producers of rotor-grade alloys.

Retech is the global leader in the production of **Plasma Arc Melting (PAM)** furnaces used for melting, refining and casting reactive, refractory, and other metals, oxides, and metalloids like silicon. A Retech PAM uses an electrically excited gas, typically Helium or Argon, to melt the materials in a sealed chamber, under inert atmosphere. Emblematic of our commitment to remain the world's foremost producer of Plasma melting systems, our furnaces are designed and configured to satisfy our customer's specific needs, including:

- Proven Refining Technology to Eliminate High and Low Density Inclusions
- Sizes from Single Torch Lab-Scale to Multi-Torch Systems for Melting Many Tons
- Flexible Feed & Withdrawal Chambers for Various Material Forms
- Production of Everything from Ingots and Powder to Castings

Retech Plasma Casting Systems possess the flexibility needed to produce a range of high-quality materials for demanding applications in the aerospace, automotive and medical industries.



Retech delivers state-of-the-art **Plasma Arc Welding Systems (PAWS)** designed to longitudinally and/or girth-weld compacted metals, like Titanium sponge, into electrodes or, alternatively, end-to-end, first-melt ingots. All Retech welders include automated welding sequences and weld-strip patterns in addition to being designed to weld a variety of compact geometries. Further, Retech plasma welders are designed to be easily operated using either helium or argon by conveniently changing process control parameters.

At Retech, we actively work with customers to develop equipment and process solutions, including upstream and downstream components, as well as alloy and application development.





Retech Systems LLC

100 Henry Station Road
Ukiah, CA 95482
USA

Phone: +1 (707) 462-6522

Fax: +1 (707) 462-4103

sales@retechsystemsllc.com

www.retechsystemsllc.com

SECO/WARWICK S.A.

8 Sobieskiego Str.
66-200 Świebodzin
Poland

Phone: +48 68 38 20 500

Fax: +48 68 38 20 555

info@secowarwick.com.pl

www.secowarwick.com.pl

SECO/WARWICK Retech

Thermal Equipment Manufacturing
(Tianjin) Co., Ltd.
7B Second Xeda Road
300385 Tianjin
China

Phone: +86 22 23828300

Fax: +86 22 23828305

sales@secowarwick.com.pl

www.swretech.com.cn

Visit One Of Our Websites to Find Your Local Representative