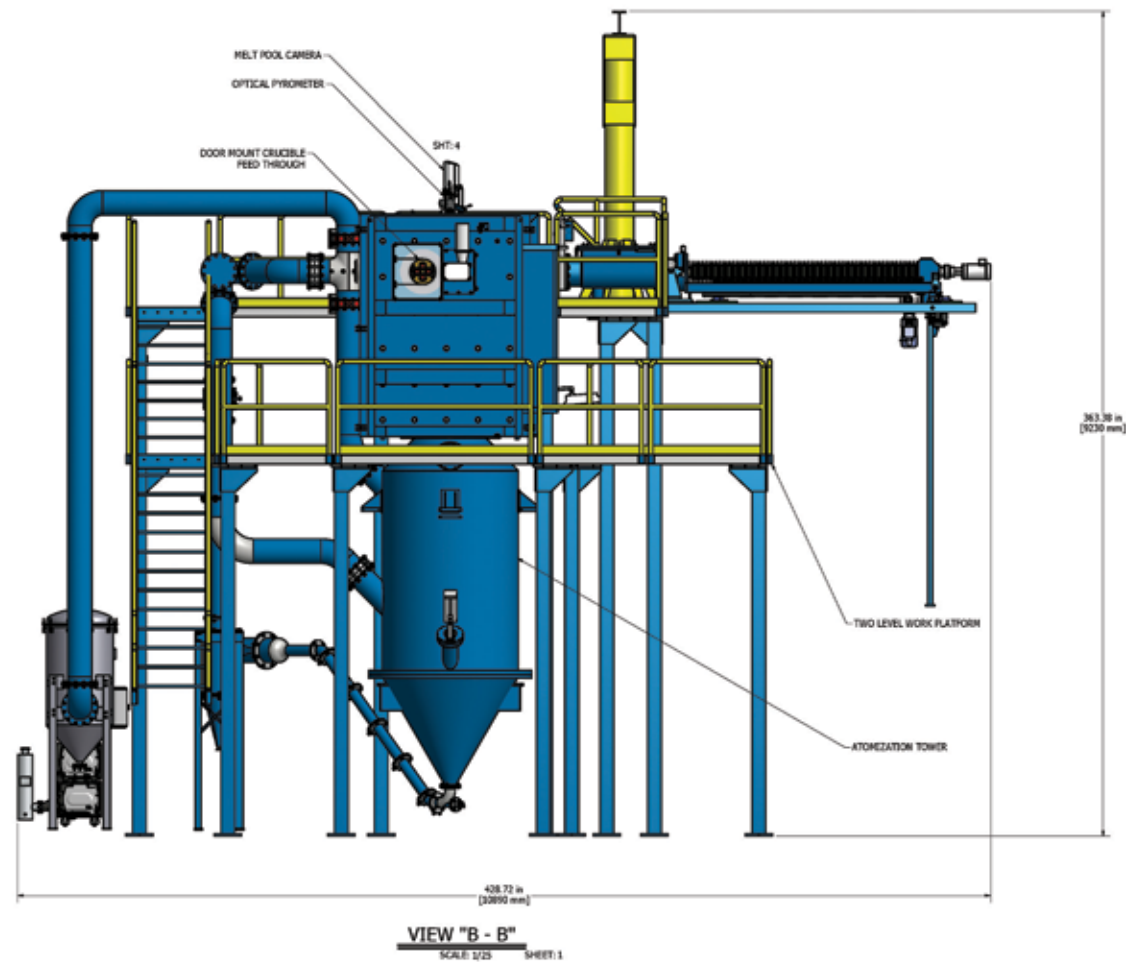


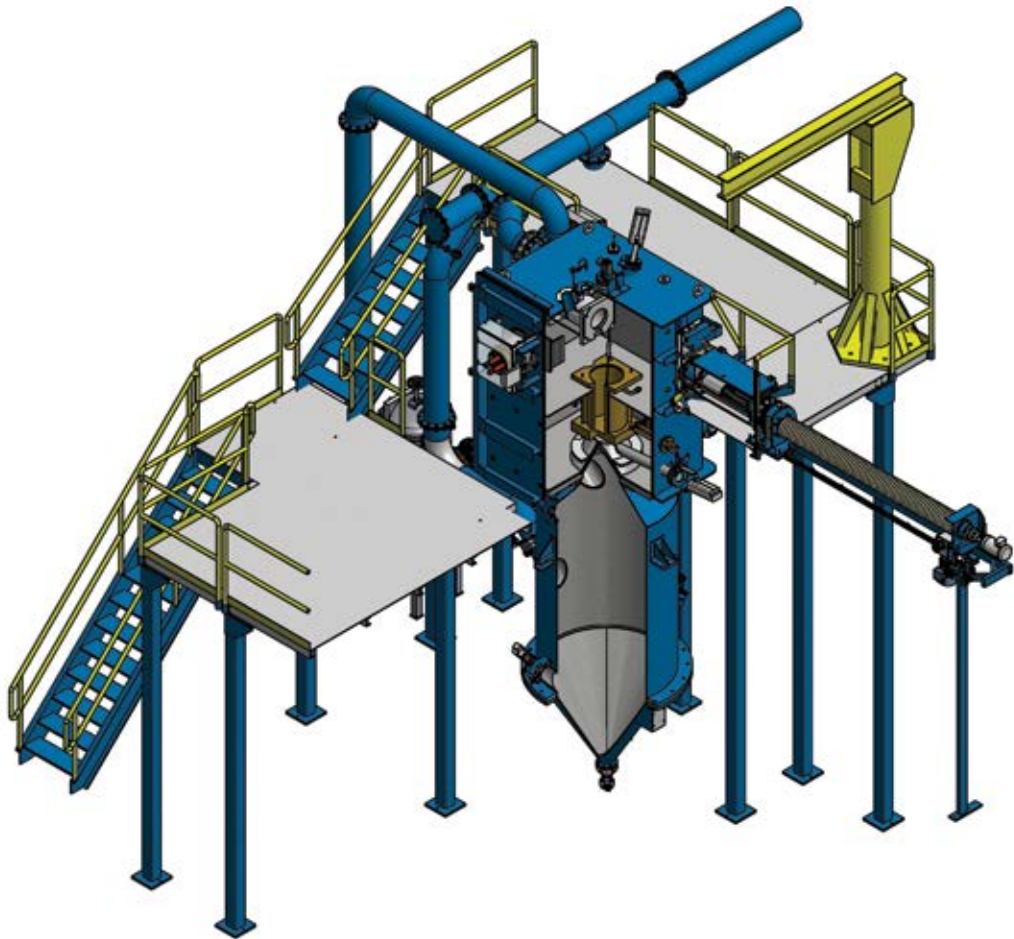
RETECH
A SECO/WARWICK COMPANY



Since 1963, **Retech Systems LLC** has been a global leader in the supply of vacuum metallurgical processing equipment. Our advanced process technologies for melting, refining and casting reactive, refractory, and rare earth metals, as well as superalloys include:

- Metal Powder Systems
- Plasma Hearth Melting (PAM)
- Electron Beam Melting (EB)
- Vacuum Induction Melting (VIM)
- Vacuum Arc Remelting (VAR)
- Rototrode® (non-consumable casting)
- Plasma & Electron Beam Welding
- Cold Wall Induction
- SC/DS/EO
- Casting Systems

As the most fully integrated furnace manufacturer in the world, we provide customer access to a wide range of in-house resources, including technology, material and process development. Whether a laboratory scale furnace or complete custom design, identifying customer needs, as well as understanding the importance of producing relevant, viable, and cost-effective technologies, is the foundation upon which Retech is built.



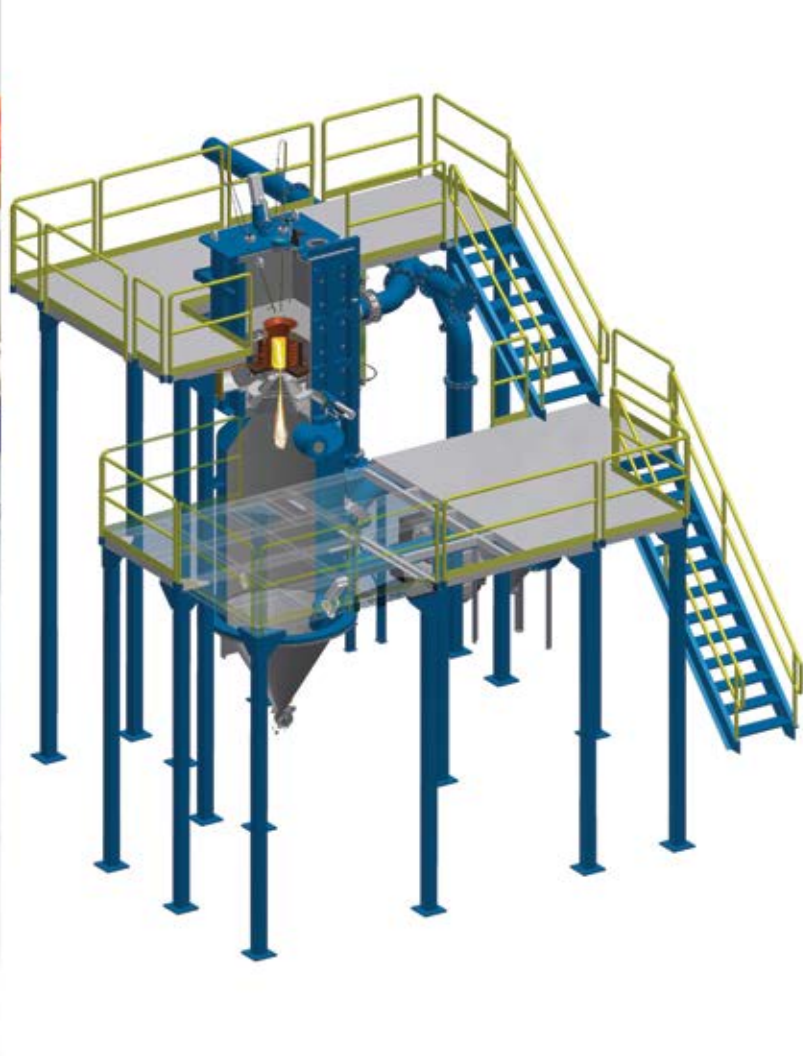
Retech Vacuum Metal Powder systems combine vacuum induction melting technology and inert gas atomization process to allow for a broad range of potential powder sizes of oxygen sensitive metals & alloys. Designed in a range of sizes from laboratory, pilot and production scale, Retech systems are tailored to meet the needs of our customer.

MATERIALS:

Nickel, Cobalt & Ferrous Alloys
Aluminum & Copper Alloys

SPECIFICATIONS:

Power Input (kVA):	100 - 1,500
Power Output (kW):	50 - 1,300
Feed Stock:	Ingots or Elementals
Alloying Capability:	Yes
L x W x H (meters):	9.14 x 9.14 x 8.53 (for Pilot Scale)



Titanium Gas Atomizer (TiGA):

As the leader in Titanium gas atomization furnace systems to the aerospace industry, Retech is well acquainted with the demands of high performance materials. Consequently, Cold-Wall Induction (CWI) melting systems can also be combined with inert gas atomization die for powder production of Titanium & Titanium Alloys. As with all our equipment, we work with our customer to ensure the equipment we provide meets their requirements.

MATERIALS:

Titanium & Titanium Alloys
Other Reactive & Refractory Metals

SPECIFICATIONS:

	REGA	TiGA
Power Input (kVA):	275	900
Power Output (kW):	240	750
Feed Stock:	50 or 100 mm dia. Bar	200 mm dia. x 50 kg Ingot
Alloying Capability:	No	Yes
L x W x H (meters):	4.87 x 5.48 x 10.97	9.14 x 9.14 x 8.53

A stylized world map in shades of gray serves as the background for the top half of the page. The map is centered and shows the outlines of continents.

Retech Systems LLC

100 Henry Station Road
Ukiah, CA 95482
USA

Phone: +1 (707) 462-6522

Fax: +1 (707) 462-4103

sales@retechsystemsllc.com

www.retechsystemsllc.com

SECO/WARWICK S.A.

8 Sobieskiego Str.
66-200 Świebodzin
Poland

Phone: +48 68 38 20 500

Fax: +48 68 38 20 555

info@secowarwick.com.pl

www.secowarwick.com.pl

SECO/WARWICK Retech

Thermal Equipment Manufacturing
(Tianjin) Co., Ltd.
7B Second Xeda Road
300385 Tianjin
China

Phone: +86 22 23828300

Fax: +86 22 23828305

sales@secowarwick.com.pl

www.swrettech.com.cn

Visit One Of Our Websites to Find Your Local Representative